

USER'S MANUAL

CONTENTS

1. GUIDE	2
1.1 IMPORTANT SAFETY INSTRUCTIONS	2
1.2 UNPACKING	2
1.3 PRODUCT OVERVIEW& ILLUSTRATION	3
1.4 INSTALLATION OF METER	4
2. OUTLINE	5
3. THE MENU OSD INSTRUCTION	6
3.1 SATELLITE FIND	6
3.2 LOOP SEARCH.....	9
3.3 PROGRAM INFO.....	9
3.4 ANGEL CALCULATION	9
3.5 MULTIMEDIA	10
3.6 SATELLITE INSTALLATION.....	10
3.7 OTHERS.....	13
3.8 SYSTEM SETTING.....	15
4. TECHNICAL SPECIFICATION	17

1. GUIDE

1.1 IMPORTANT SAFETY INSTRUCTIONS

Thank you for choosing our product. Before installation, we would like to remind you some notes, which is very important for operating safely and properly, as follows:

- Be sure to read this user manual before starting your operation.
- You must install the dish with correct direction and angle. If the dish is not working properly, contact your local dealer.
- When the unit is suddenly moved to a hot area from a cold area, it may cause some problems. In that case, turn off the power, and turn on again after 1-2 hours.
- Keep meter placed in clean space with sufficient ventilation.
- Do not cover the meter with or place it on a unit that emits heat.
- Clean the case by a soft cloth with a little washing liquid.
- Do not remove the cover.
- Do not let the unit exposed to extreme heat, cold or humid conditions.
- No liquids or any other materials to come inside of the unit.

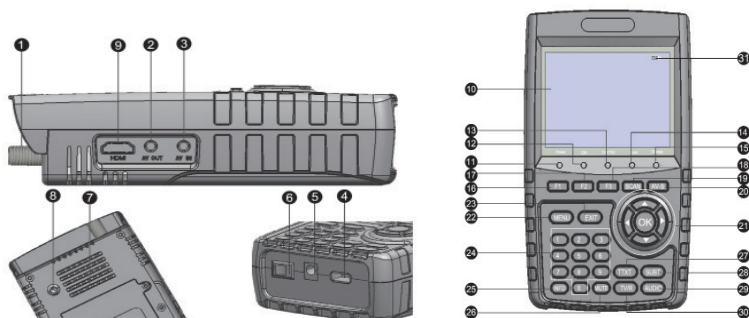
1.2 UNPACKING

Open the package and make sure it includes all below items, if any missing, please contact the reseller for replacement.


1. Digital Satellite Meter
2. User's manual
3. AV cable
4. Car charger cable
5. Power Adaptor
6. Strap of carrying case

NOTE: Please refer to our actual configuration.

1.3 PRODUCT OVERVIEW& ILLUSTRATION



NO	Description	FUNCTION
1	LNB In	Connect to satellite antenna cable
2	AV OUT	Connect to AV port for TV
3	AV IN	Connect to AV port for meter
4	USB Port	Connect to USB memory
5	DC Slot	Connect to adaptor input
6	Power Switch	Turn on/off meter
7	Speaker	Speaker integrated
8	Torch LED	Night lighting
9	HDMI	Use HDMI cable to connect for TV
10	LCD	TFT LCD Screen
11	Power	Power indicator light
12	22KHz	22KHz indicator light
13	13V/18v	Vertical /Horizontal polarization voltage output light
14	LOCK	Signal lock indicator light
15	Charger (Note1)	Charger indicator light
16	F1	Auxiliary function key
17	F2	Auxiliary function key
18	F3	Auxiliary function key
19	SCAN	'Quick Search'menu shortcut key
20	AV-S(Note2)	Switch AV mode: AV Normal; AV IN and AV out
21	NEVIGATION KEY	Volume Control or move cursor, channel or change, confirmetc

NO	Description	FUNCTION
22	MENU	Show the main menu on the screen or jump back to previous menu in sub-menu setting conditions
23	EXIT	Escape from present menu and save the settings
24	0-9	Number key to select channels or enter programming
25	INFO	INFO key
26	MUTE	MUTE
27	Red & TTXT	Red KEY & Teletext interface
28	Green & SUBT	Green key & Subtitle interface
29	BLUE & AUDIO	Blue key & Audio interface
30	Orange & TV/R	Orange key & TV and radio switch
31		When power on the meter ,displays the battery level

Note1: When the adapter insert into dc slot, charge indicator is often bright. When the batteries charged sufficient, the charge indicator will go out.

Note2: In the AV out mode, speaker is off.

1.4 INSTALLATION OF METER



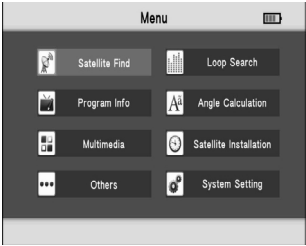
2. OUTLINE

- 3.5 Inch High Definition TFT LCD Screen
- Fully DVB-S/DVB-S2, MPEG-2/MPEG4 compliant
- MPEG-2 / H.264 Hardware decoding
- Digital meter for signal strength and quality
- Supports scan of Auto,Blind,Manual or NIT
- Sound and Light Alarm for Locking Signal
- Auto Calculate Angle of AZ ,EL
- Supports DISEQC 1.0/1.1/1.2 ,0/22khz Tone
- Speaker Integrated
- Support both AV out and AV in
- LNB short protect
- 7.4V/3000mAh Li-Ion Battery Included
- Software upgrade via USB port
- Easy to carry

3. THE MENU OSD INSTRUCTION

If you have installed and connected the cables to the receiver, pressing **MENU** to display the Main Menu.

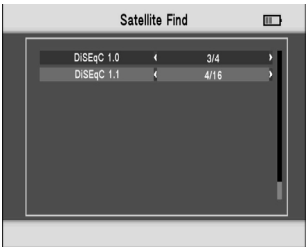
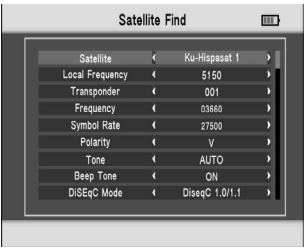
- Satellite Find
- Loop Search
- Program Info
- Angle Calculation
- Multimedia
- Satellite Installation
- Others
- System Setting



Press the keys of **▲▼◀▶** to move the cursor up or down in the menu interface, then use **OK** to confirm a selection.

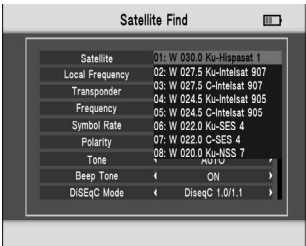
3.1 SATELLITE FIND

Select Satellite Find, then press **OK** into the Satellite Find.



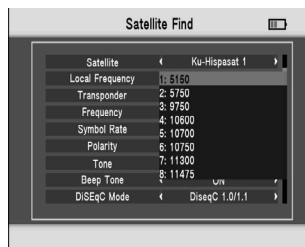
3.1.1 SATELLITE

Press **OK** into the satellite list. Use **▲▼** key to move the cursor, then press **OK** to select the satellite of you want.



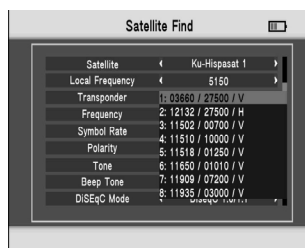
3.1.2 LOCAL FREQUENCY

Press ◀▶ key into the LNB list. Use ▲▼ key to move the cursor then press OK to select the LNB of you want.



3.1.3 TRANSPONDER

Press ◀▶ key into the TP list. Use ▲▼ key to move the cursor then press OK to select the TP of you want.



3.1.4 FREQUENCY

Frequency of the current transponder, Input the value by using the number keys.

3.1.5 SYMBOL RATE

Symbol rate of the current transponder, Input the value by using the number keys.

3.1.6 POLARITY

Press ◀▶ key to change vertical or horizontal of polarization.

3.1.7 TONE

Press ◀▶ key to turn on or off 22kHz TONE Switch.

3.1.8 BEEP TONE

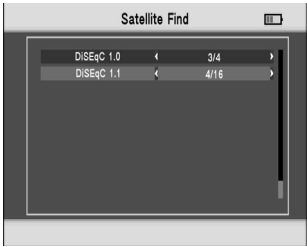
Press ◀▶ key to Switch beep tone. If we open the beep tone, the beep of lock alarm will open when we enter into the search screen.

3.1.9 DISEQC MODE

Press ◀▶ key to set the type of port as Diseqc 1.0/1.1, Diseqc 1.2/USALS or Unicable.

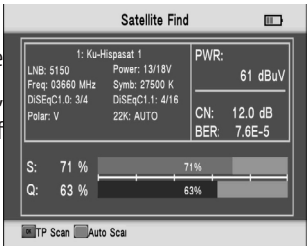
3.1.10 DISEQC TYPE & INPUT

If we select diseqc1.0/1.1, we can press ◀▶ key to set the port number. If select Unicable, we can press ◀▶ to select IF Channel, and use number key to input Center Frequency.



3.1.0.1 Quick Search

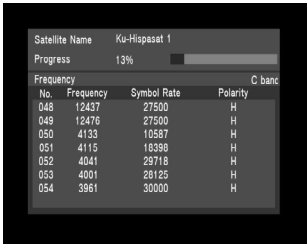
In the Satellite Find interface, you can press OK to enter the quick search. If you have set the Longitude and Latitude under the system setting, the angle of LNB, the orientation and elevation of antenna all will be displayed on the screen.



- TP Scan: Press OK to search the current TP.

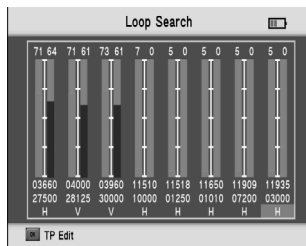


- Auto Scan: Press the red key to auto blind search the current satellite.

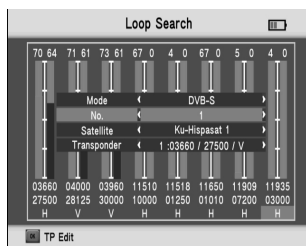


3.2 LOOP SEARCH

Select Loop Search, then press **OK** into the Loop Search. There will have 8 TP on your sight.



Press **OK** to enter TP Edit, you can edit Satellite and Transponder.



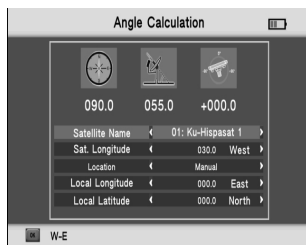
3.3 PROGRAM INFO

In the Program Info, you can check the information of the current TV.



3.4 ANGEL CALCULATION

You can edit angel parameter of the satellite that you select.



3.5 MULTIMEDIA

Select Multimedia, then press **OK** into the Multimedia.

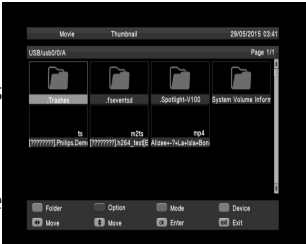


- Movie

Press red key to change the folder file viewing to detailed list.

Press green key to the mode option of play files and text encode, then press **MENU** return.

Press orange key to change mode to big Icon browsing. Press the arrow keys to move the cursor, then press **OK** to enter the file.



In the play interface:

F1 Key: Normal play.

F2 Key: Pause.

F3 Key: Fast backward. Press F1 key return.

SCAN Key: Fast forward. Press SCAN key return.



- Music& Photo

Please refer to the Movie operating.

3.6 SATELLITE INSTALLATION

- Satellite Setting
- Auto Scan
- TP Manager



3.6.1 SATELLITE SETTING

In the all Satellites Setting:

Press red key into the Transponder interface.

Press green key into auto scan interface.

Press ▲▼ key to move the cursor, then press

OK to change the satellite select or unselect.

Press ◀▶ to set the single satellite setting.

In the setting interface:

1. TP Manage: press red key into TP manager.

2. Auto Scan: press green key into auto scan.

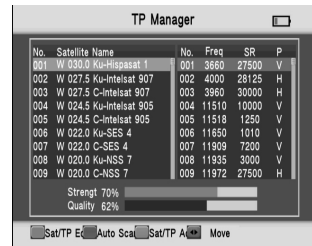
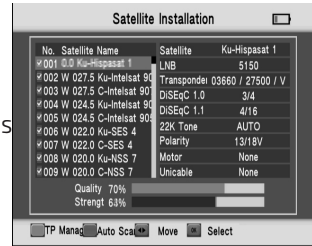
3. LNB: Press ◀▶ key then change the LNB frequency.

4. Transponder: Press ◀▶ key then change the current TP.

5. DiSEqC1.0: Press ◀▶ key to change the DiSEqC port.

6. DiSEqC1.1: Press ◀▶ key to change the DiSEqC port.

7. Motor: Press ◀▶ key to change the DiSEqC port.



If we select DiSEqC1.2/USALS, press **OK** into the motor interface.

- Transponder: Press **OK** to change the current tp.

- Mode: A, Position

A1 Direction: Press ◀▶ key to move direction to west or east.

A2 Position: Set the satellite save position.

- Mode: B, Drive to Zero

Move the cursor to GO, then press **OK**, the motor will go to zero.

- Mode: C, Drive to stored position

Move the cursor to GO, then press **OK**, the motor will go to position of we have saved in mode A Position.

- Mode: D, Drive to Satellite

Move the cursor to GO, then press **OK**, the motor will go to position of auto calculate.

- Mode: E, Recalculate

E1 Direction: Press ◀▶ key to move direction to west or east.

E2 Recalculate: Recalculate the satellite position.

- Mode: F, Set East Limit or Set west Limit

Limit the motor move to east or to west.

F1 Direction: Press ◀▶ key to move direction to west or east.

F2 Store: Save the satellite position of A2

- Mode: G, Set Limit enable or disable
Set the limit enable or disable.

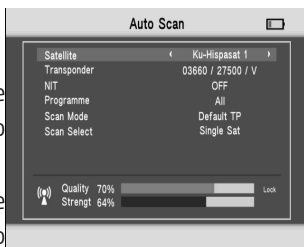
8. Unicable: Press ◀▶ key to select Unicalbe then press OK into the Unicable setting.

- Transponder: Press ◀▶ key to change the current TP.
- IF Channel: Press ◀▶ key to change SCR channel.
- Center Frequency: Use number key to input number.

3.6.2 AUTO SCAN

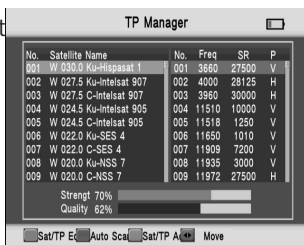
In the Sat/TP Manager submenu, select Auto Scan into Automatic SAT Scan.

- Satellite: Press ◀▶ key into the satellite list. Use ▲▼ key to move the cursor, then press OK to select the satellite of youwant.
- Transponder: press ◀▶ key into the TP list. Use ▲▼ key to move the cursor, then press OK to select the satellite of you want.
- NIT: press ◀▶ key to switch network searcher on/off.
- Program: TV search type ALL/FTA.
- Scan Mode: scan mode select, we can select Default TP / One TP/Blind.
- Scan Select: scan all satellites of selected or the current satellite.



3.6.3 TP MANAGER

In the Sat/TP Manager submenu, select Transponder into Transponder.



Press ▲▼ key to select the current satellite.

- Edit Sat

Press red key to edit satellite.

NO.: Satellite number.

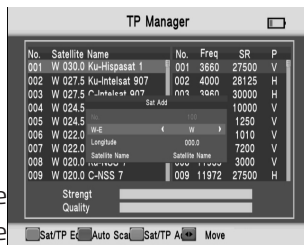
W-E: Switch the satellite longitude west or east.

Longitude: Use number key input value.

Satellite Name: Press **OK** will open the keyboard, use the direction key input satellite name.

- Add Sat

Press orange key to add a satellite.



Press ◀▶ key to TP manager.

- Edit TP

Press red key to edit TP.

NO.: TP number.

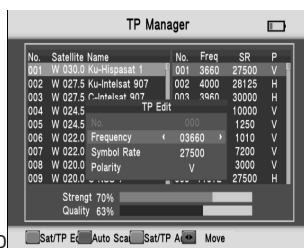
Frequency: Use number key input value.

Symbol Rate: Use number key input value.

Polarity: Press ◀▶ to change polarity.

- Add TP

Press orange key to add a TP. Please refer to TP edit operations.



3.7 OTHERS

- TV Channel Editor
- Radio Channel Editor
- EPG
- System Info



3.7.1 TV CHANNEL EDITOR

Select TV Channel Editor, then press **OK** into the CH List.

- Edit

Press red key into edit list, you can edit program name, move program, sort program, and skip program.



- Lock

Choose the program you want to lock, and press green key to finish the operation.

- Del

Choose the program you want to delete, and press orange key to finish the operation.

- Sat

Press blue key to select All Satellite or the current satellite.

3.7.2 RADIO CHANNEL EDITOR

Please refer to TV Channel Editor.

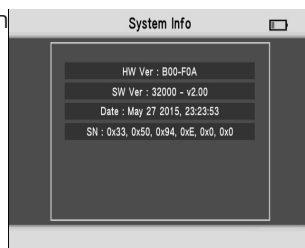
3.7.3 EPG

Press **▲▼** key to change program. If the current program has EPG information, it will appear on the right side of the window. Press **◀▶** key to change the day of the EPG information.

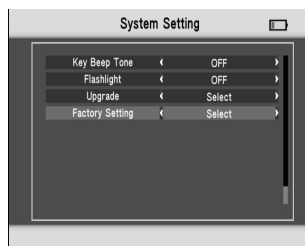
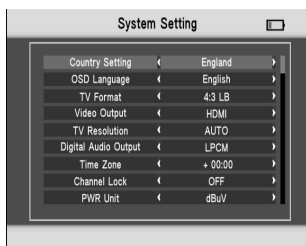


3.7.4 SYSTEM INFO

There are some system information you can see.



3.8 SYSTEM SETTING



- Country Setting

Press ◀▶ key to change the country

- OSD Language

Press ◀▶ key to change the OSD Language.

- TV Format

Press ◀▶ key to change the TV Format.

- Video Output

If we connect HDMI interface, we can press ◀▶ key.

- TV Resolution

On the basis of the Video Output choice, we can press ◀▶ key to change the TV resolution.

- Digital Audio Output

Press ◀▶ key to change the LPCM or RAW format.

- Time Zone

Press ◀▶ key to change the Time Zone.

- Channel Lock

If open channel lock, you will input password before enter submenu.

- PWR Unit

Press ◀▶ key to change the PWR unit.

- Key Beep Tone

Press ◀▶ key to switch key beep tone on/off.

- Flashlight

Press ◀▶ key to switch Flashlight on/off.

- Upgrade

Will update the file into the USB, then insert the machine. Press OK to update interface, use the direction key to select update file, and press OK to update.

Warning: Please don't turn power off or pull out the USB, otherwise it will damage the machine's software, and can't boot again.

- Factory Setting

Press ◀▶ key, then press OK to confirm factory reset.

NOTE: if you set factory setting, all the user settings and the database will be reset.

4. TECHNICAL SPECIFICATION

TRANSMISSION STANDARDS	
DVB-S2/S, MPEG-2,MPEG-4,H.264	
SATELLITE INPUT/DEMODULATION	
Connector Type	F Type
Input Frequency	950 to 2150 MHz
Signal Input Level	- 65 to -25 dBm
Band Switch Control	22KHz
LNB Supply	13V/18V, IMax 400mA
Demodulation Type	QPSK,8PSK
Symbol Rate	2<Rs<45Mband(SCPC/MCPC)
LCD FEATURES	
LCD Type	TFT Transmissive
Number of Dots	480(RGB) x272
Active area (WxH)	70.02x52.58 mm2
AV output interface	
Connector Type	3.5 mm jack
Video Output	CVBS
Audio Output	Stereo Audio L/R output
HDMI output connector	
Format	HDMI 1.3a
AV input interface	
Connector Type	3.5 mm jack
Video Input	CVBS
Audio Input	Stereo Audio L/R input
AUDIO/VIDEO PROCESSING	
Video decompression	MPEG-2 MP@HL, MPEG-1 Decoding,MPEG-4 ASP@L5 HD resolution,H.264 MP&HP@L4,HW JPEG decoding
Resolving rate	PAL-25 frame@720*576,NTSC-30 frame@720*480
Signal compatibility	Support conversion for different video formats
Video Format	4:3,16:9,By Pan & Scan and Letter Box conversion
Audio Decompression	MPEG-1 Layer I/II, MPEG-2 Layer I/II

Audio Output Mode	Stereo, Mono,R/L
DATA SERVICE PORT	
Connector	USB
Data Protocol	USB2.0 interface
File Management System	NTFS,FAT32,FAT16
File Format	wma,mp3,mp4,avi,jpg,jpeg,bmp,img
MICROPROCESSOR	
Microprocessor	78346
Clock Frequency	550MHz
SDRAM Memory	DDR2 512Mbit
POWER SUPPLY	
Li-Ion Battery	7.4V/3000mAh
Adapter	OUTPUT :DC12V/1.5A, INTUPT: 100-240VAC 50/60Hz
Power Consumption	Max. 10W
PHYSICAL CHARACERSTICS	
Size (W x D x H)	10.1x17.7 x4.7(cm ³)
Net Weight	0.46kg

5. TROUBLE SHOOTING

Problem	Possible Causes	What To Do
No display light up	Power switch is not on or run out of batteries	Check to make sure power on even on adapter
No sound or picture, but the front panel power light is ON.	AV IN jack insert, but no video input	Pull out AV IN cable
No sound or picture	The satellite dish is not pointing at the satellite.	Adjust the dish. Check the Signal Level in the Antenna Setup Menu
Bad picture/Blocking Error	No signal or weak signal	Check the cable connections. LNB and other equipment connected between the LNB and the meter and adjust the dish.
	The satellite dish in not pointing at the satellite	Adjust the dish.
	Signal is too strong	Connect a signal attenuator to the LNB input
	Satellite dish is too small	Change to a larger dish
	LNB noise factor too high	Change to an LNB with lower noise factor
	The LNB is faulty	Change the LNB
AV out No picture(Video)	The system is connected by SCART cable and TV is not in AV mode.	Check the UHF channel fixed in your system and tune the UHF properly.
The key is not working	Out of battery	Even on adapter
	Key blocks	make sure no blocks between the front panel

Note: If you still can not resolve the problem with above reference. Please contact the local dealer or their after-sales service center.

USER'S MANUAL